

## Introducing Proforest

Forest and agricultural commodities such as timber, palm oil, soy, sugar, rubber, pulp and paper, beef and cotton are essential in providing the food, fuel and fibre needed for a global population increasing in both numbers and wealth.

If managed well, commodity production can meet this growing demand and contribute to sustainable long-term development, but if poorly implemented it can cause environmental and social problems ranging from deforestation to human rights abuses.

**Proforest's mission is to help people to produce and source natural resources sustainably.**

We work throughout supply chains to support sustainable production and sourcing of commodities, working directly with producers and supply chain companies, as well as governments, civil society and communities.

We have over 15 years of experience working with more than 1000 agricultural and forestry supply chains, and with producers, governments, smallholder farmers and communities in more than 40 countries.

## How we work

We support people who are involved in producing, sourcing and governing agricultural commodities and forest products as they move towards more sustainable practices.

We do this in three ways:

- We help companies and organisations to **implement responsible practices** in the production and sourcing of palm oil, soy, sugar, forest products, beef and other commodities.
- We **develop capacity** among governments, producers, processors, buyers, auditors and civil society to understand what responsible production and sourcing mean in practice.
- We support **multi-stakeholder initiatives** to build trust and develop consensus among diverse actors to develop practical ways of promoting the responsible production and sourcing of agricultural commodities and forest products.



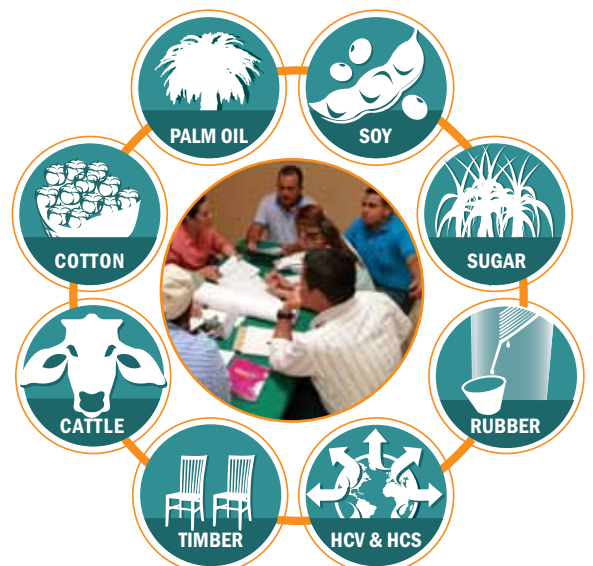
## A unique perspective

Proforest is a unique non-profit group that works through a combination of consultancy services and programmes.

Through our consultancy services we work directly with companies, supporting them in their transition to better practices.

Our programmes build the enabling environment and address key barriers to better practices by fostering awareness of the issues, and building local capacity and ownership of sustainability initiatives.

By combining these two approaches we are uniquely placed to help bridge the gaps between business, governments and civil society, and to develop practical approaches to responsible production and sourcing that can help transform commodity sectors.



## Delivering results

We have identified four phases in building sustainable agricultural and forest commodity sectors. These apply at the level of individual companies, commodities or countries.



### Awareness

The first step in any process of change is to understand the problems, opportunities and changes needed. It is a continuous process for each new issue, commodity, country or stakeholder group.

**Proforest works with partners and clients to identify issues that matter to them. We provide training and capacity building to raise awareness among companies, governments and civil society.**

### Commitment

To bring about change – whether in an individual supply chain or at the scale of a sector – governments, companies and civil society need to decide to act and plan what to do. There needs to be a commitment to change.

**Proforest supports companies and other organisations to make ambitious but achievable commitments, to communicate them effectively both internally and externally, and to plan how to implement them in practice.**

### Implementation

Implementing responsible production and sourcing is complex in practice. Producers and supply chain managers need to know how to interpret generic environmental and social requirements for their specific context.

**Proforest works with producers, multi-stakeholder initiatives and governments to provide clear interpretations of ‘responsible production and sourcing’, and to support producers and suppliers in meeting those requirements.**

### Impact

To have real impact, which delivers sustainable livelihoods in sustainable landscapes, individual production and sourcing initiatives need to be integrated with each other, as well as with other sustainability initiatives.

**Proforest works proactively with partners and clients to integrate initiatives at the scale of landscapes and jurisdictions. We focus on supporting local ownership and benefits from initiatives, and transforming entire supply chains.**



## Our team

With regional offices in Ghana, Brazil and Malaysia and our international office in the UK, our team speaks over 20 languages and has in-depth experience of working on the ground in more than 40 countries worldwide.

To find out more visit our website: [www.proforest.net](http://www.proforest.net)

**International Office (UK)**  
T: +44 (0) 1865 243 439  
E: [info@proforest.net](mailto:info@proforest.net)

**Africa Office (Ghana)**  
T: +233 (0)302 542 975  
E: [africa@proforest.net](mailto:africa@proforest.net)

**Latin America Office (Brazil)**  
T: +55 (61) 8624 2519  
E: [americalatina@proforest.net](mailto:americalatina@proforest.net)

**Southeast Asia Office (Malaysia)**  
T: +60 (0)3 2242 0021  
E: [southeastasia@proforest.net](mailto:southeastasia@proforest.net)